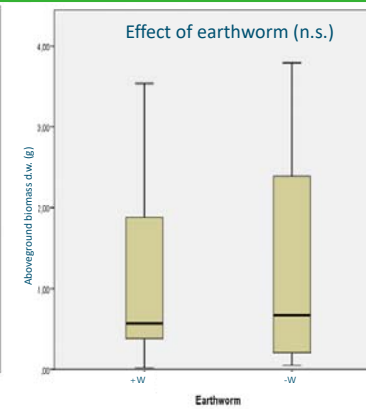
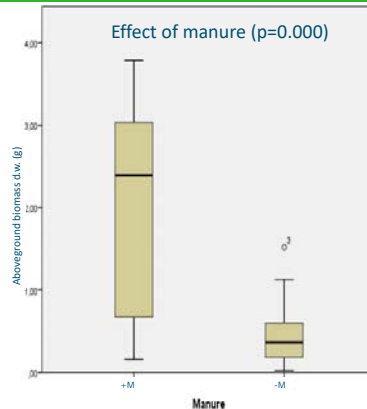
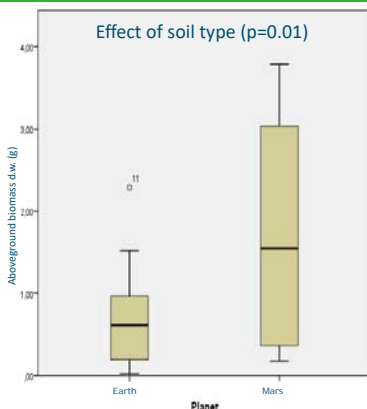
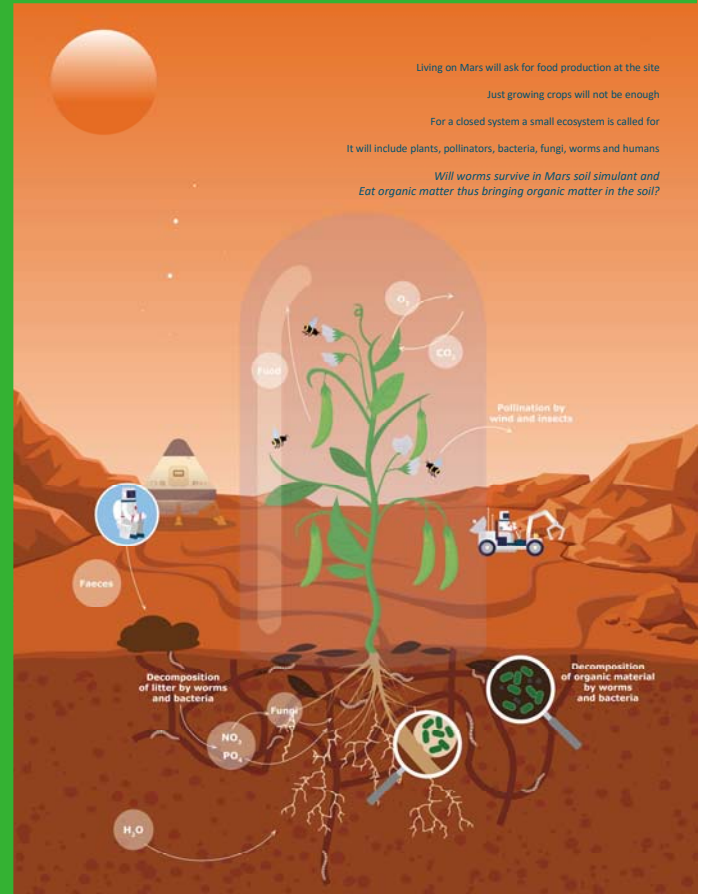


Effect of Earthworms, pig slurry and organic matter on plant growth on Mars soil simulant

Wieger Wamelink¹, Joep Frissel¹, Line Schug¹ and Ingrid Lubbers²

¹Wageningen Environmental Research, Wageningen University & Research, ²Soil Geography and Landscape, Wageningen University



1. No effect of earthworm on the growth of Rucola
2. Significant effect of pig slurry
3. Mars soil simulant performs better than poor sand
4. Worms did survive and produced offspring

1. Tropical worms
2. Longer experiment to get an effect of the worms
3. Replace pig slurry by human faeces



Wieger Wamelink
Wageningen University & Research
P.O. Box 47, 6700 AA Wageningen
wieger.wamelink@wur.nl
www.wur.nl/nl/Expertises-Dienstverlening/Food-for-Mars-and-moon.htm
facebook.com/Food.for.Mars.and.moon



Food
for Mars & Moon

Wageningen University & Research



WAGENINGEN
UNIVERSITY & RESEARCH



100years
1918 — 2018